

Description

The **MMC** from Deltasense is a miniature plug and play efficient triac controller for small and medium sized single phase motors up to 8A. Loads can be controlled in both 2 or 3 wire connection mode (capacitor). Available open framed for Din rail mounting (clip available in request) or encapsulated in an ABS or ALU cabinet.

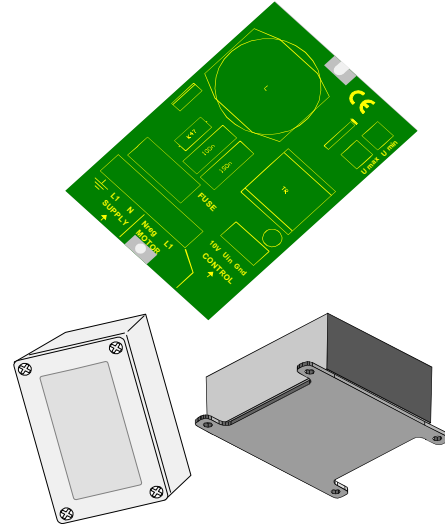
**MMC** has an 0-10V control input, or could easily be controlled from a potentiometer. Modern microcontroller on board ensures proper operation, and settings of **MIN** and **MAX** speed can be done from internal trimmers on the PCB. Automatic scaling of min and max in relation to the control input can be implemented in the software. Please note that this is an option when ordering. Otherwise, min and max will be scaled as 0 and 100% from 0.10V or potentiometer input.

**MMC** has a PCB fuse for added protection. Standard T4-8A 4x20mm fuses are used.

**MMC** is mounted on a 2mm Alu plate for easy mounting. Or the unit can be mounted on your own custom backplane, metal plate etc, for better cooling for higher temperature environments.

**MMC** is supplied with standard software, but could easily be changed for scaling of the input, boost functions, ramp functions or any other input scheme related to the 0-10V input. An ON/OFF system could also be added.

Picture



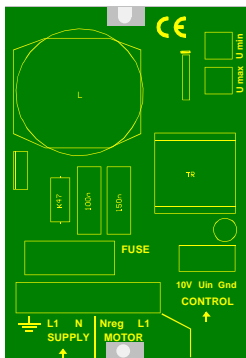
- MODERN MICROCONTROLLER TRIAC CONTROL
- LOW COST AT HIGH OUTPUT
- FLEXIBLE CONTROL SCHEME
- FLEXIBLE ENCAPSULATIONS
- QUICK DELIVERY TIMES.....
- BEST BUY FOR FUNCTIONALITY

Technical data

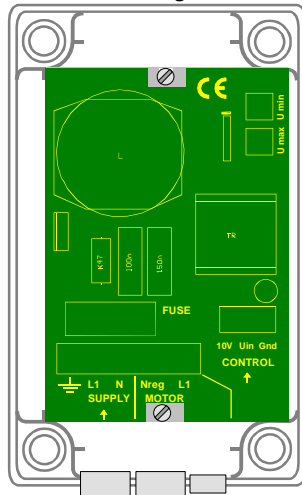
- Supply 180-250V~ 50Hz
- Fuse protected
- Max current 4-6-8A (specify on order)
- Max motor 1.5kW single phase
- Symmetrical Phase control
- Efficiency min 80%.
- Ambient temperature -10 - +40°C
- Humidity non condensing 10-90%RH
- Adjustable min and max motor voltage
- 0-10V control input as standard
- 2-10V with auto stop <1.5V optional
- Possibility for potentiometer control
- Elevation terminals on PCB
- IP20 Open frame : 65 x 95 x 30mm mounted on a 2mm alu plate with fixings
- IP67 ABS : box with cable glands 130 x 80 x 60mm
- IP54 ALU : box without cable glands 115 x 90 x 54. electronic molded
- CE: EMC 89/336/EEC LVD 73/23/EEC
- **OEM product, software and encapsulation can be specified to fit your application / specification**

Encapsulations

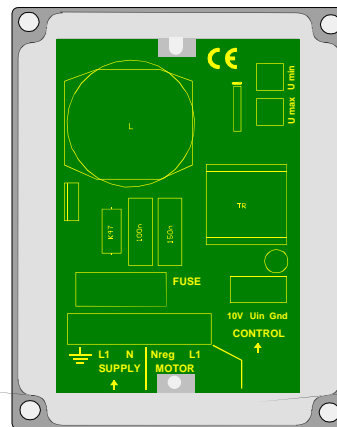
IP 20 Open frame 65 x 95 mm



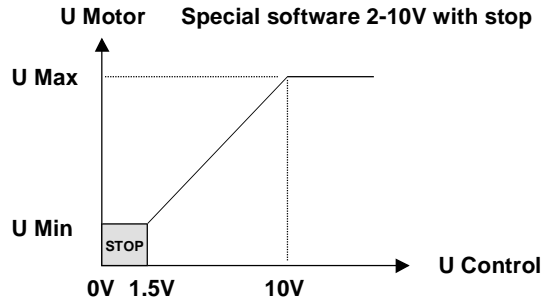
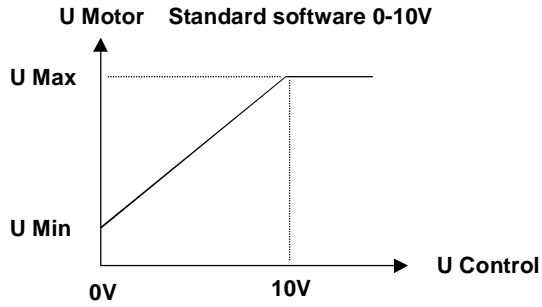
IP67 ABS 130 x 80 x 60mm with cable glands



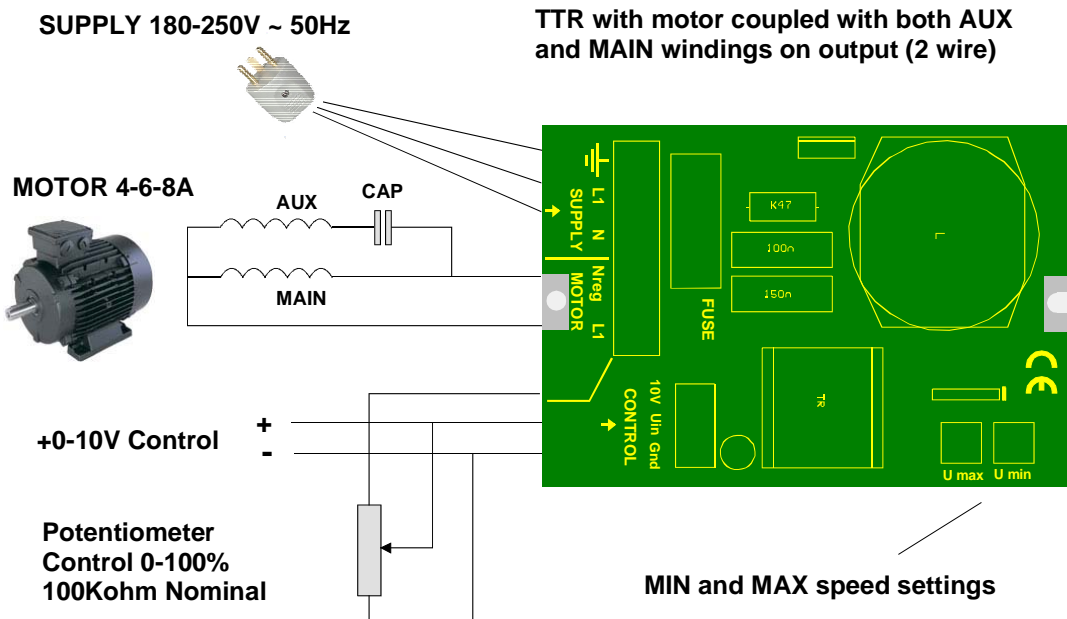
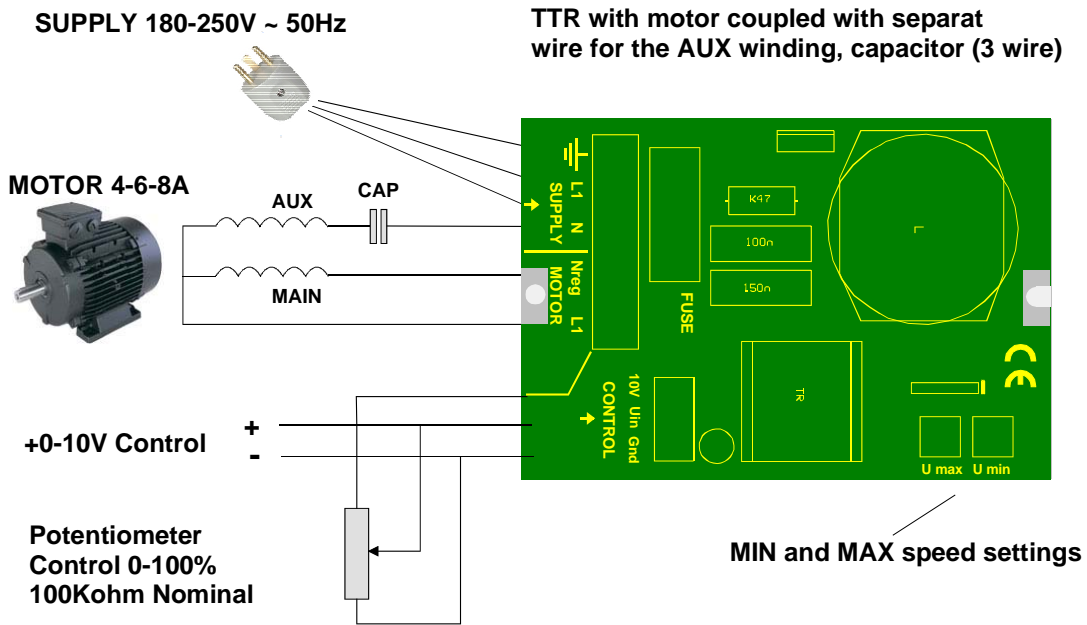
IP54 ALU 115 x 90 x 54mm without cable glands 100 % molded electronics



## Example control input

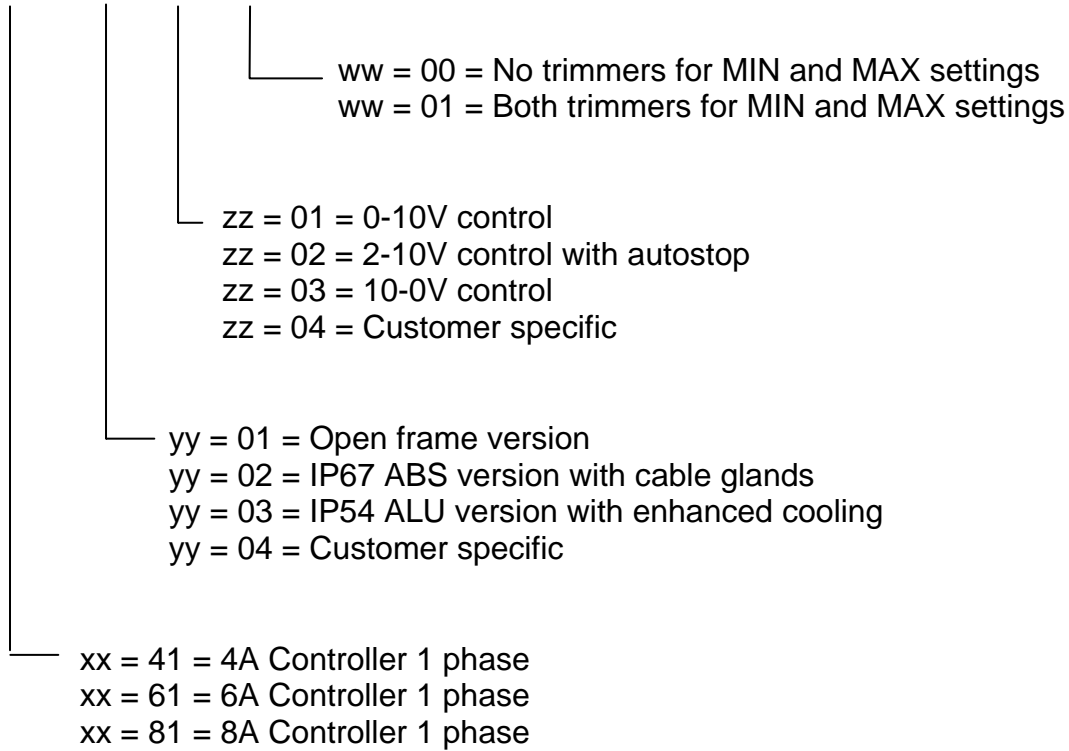


## Example connections



## Ordering information

MMC - xx - yy - zz - ww -uu



Example :

MMC-61-01-01-00

6A controller in open frame with 0-10V input and NO trimmers